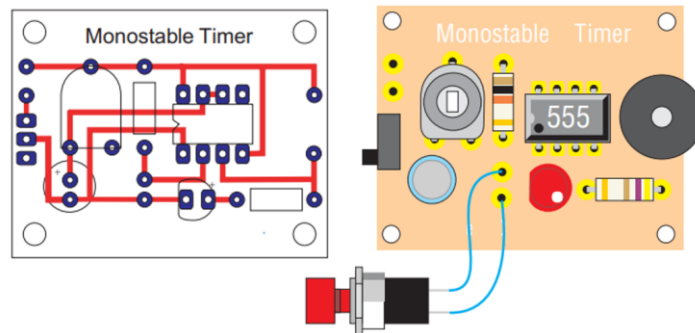


Timer

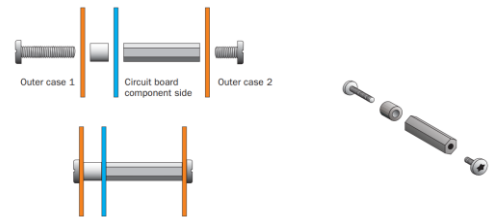
Casing Construction

The diagram on the left shows the position of the location holes needed to cover the battery and circuit. The picture to the right shows the circuit board and the battery together with the background shape.



Equipment / Components Needed

- 4 nos. of M3 6mm pan head slotted screws
- 4 nos. of M3 12 mm pan head slotted screws
- 4 nos. of M3 spacer 4mm
- 4 nos. of 18mm threaded spacers



Procedure for Construction

1. Attach the two pieces of outer case material together using double-sided tape.
2. Attach your design template.
3. Cut around the template of the design taking care to ensure that you have left sufficient material to cover the circuit board and the battery that will be placed behind it.
4. Smooth the edges by filing, and with glasspaper.
5. Place the circuit board onto the outline shape and drill through the four marked holes with a 3mm drill.
6. Take care not to damage the circuit board whilst you are doing this.
7. Separate the two sides of the case.
8. Mark and drill a 7mm diameter hole in the front panel of the case for mounting the push-to-make switch.
9. Solder the components into the circuit board.
10. Assemble case and circuit board using the spacers.

www.verticalmiles.com